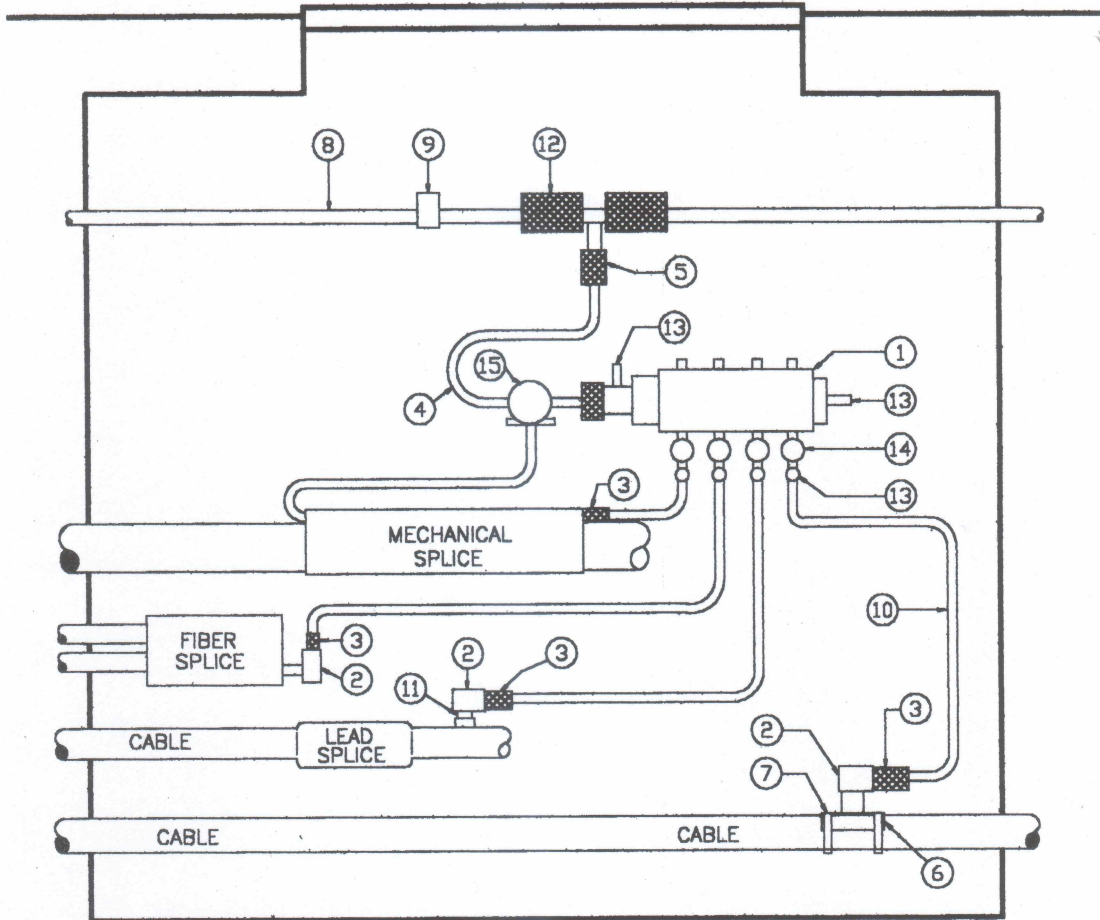




UNDERGROUND MANHOLE PIPE FEED INSTALLATION



- | | |
|------------------------------|---|
| ① PM-7774 Y MANIFOLD, 4 PORT | ⑨ P-1034 ONE HOLE CLAMP |
| ② P2202P22 1/8" ELBOW | ⑩ PEC-430B POLY AUR TUBE |
| ③ P-356A CHECK VALVE | ⑪ PEC-401 C FLANGE |
| ④ PEC-430C 1/2" AIR TUBE | ⑫ PEC-703 AIRPIPE UNION |
| ⑤ PEC420F CONNECTOR | ⑬ PEC-501 CABLE PRESSURE/FLOW TEST POINTS |
| ⑥ PEC-426A F FLANGE | ⑭ CPE-003 SHUT OFF VALVE |
| ⑦ PEC-405 SEALING CLAMP | ⑮ FLOW TRANSDUCER |
| ⑧ PEC-701 GAS FEEDER PIPE | |